

# Double Bass

## Symphonie Espagnole

E. Lalo, Op.21.

Arr. by P.Struck

### Part I.

Allegro non troppo (♩ = 76)

5  
*ff*  
4

9 a tempo 3  
*ff* *ff*

17  
*ff* *ff*

23  
*ff* *ff*

29  
*ff*

34  
*ff*

40 pizz.  
*ff*

46 *pp*  
*pp* *f pp*

52 *cresc. mf* *pp*

58 *ppp* *cresc.*

64 *ppp* arco *f* *f*

70 **4** pizz. arco *mf* *f p*

79 *f p* **3** *ff* **3** *ff*

85 **3** *f*

93 **2** **3** pizz. *pp*

102 **7** *pp*

114 **5** *pp* arco *f* **2**

125 *ppp* **5** pizz. *ppp*

135 *cresc.* *f*

141 **3** pizz. *ff* *pp* **2**

149 arco pizz. 15 arco

*ff* *pp* *f* *ff*

168

*ff*

174 pizz.

*ff* *pp*

180

*pp*

186

*f pp* *cresc. mf* *pp*

192

*ppp*

198 arco

*cresc.* *ppp* *f*

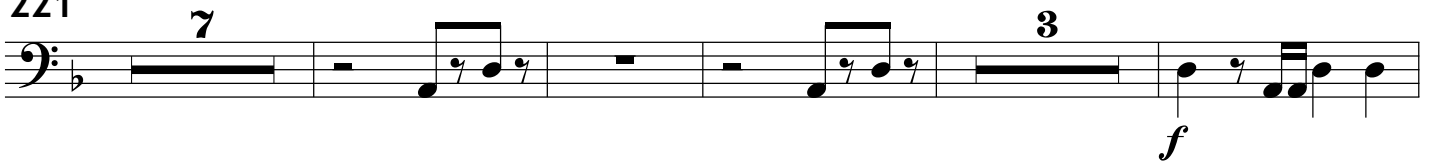
204 arco

*f* *f* *f* *f* *f* *f* *f*

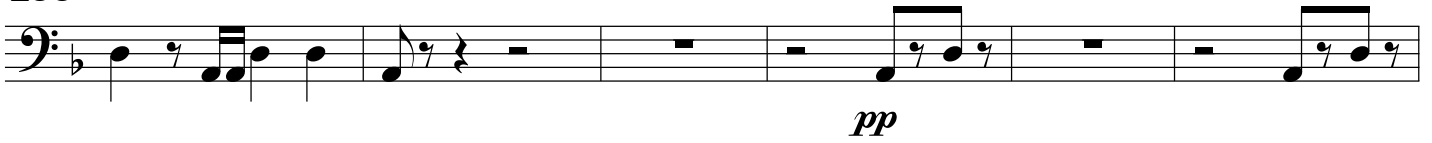
213 pizz.

*p*

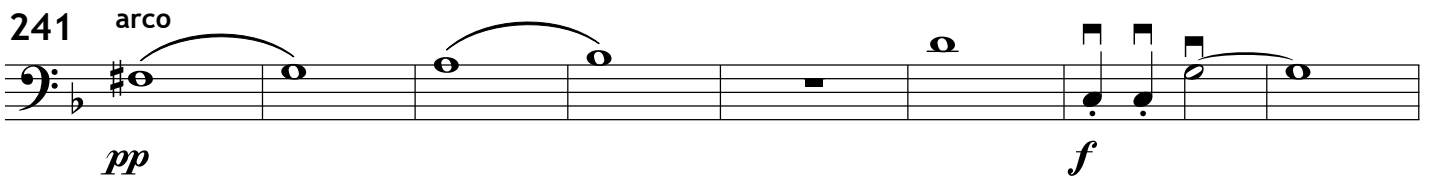
221



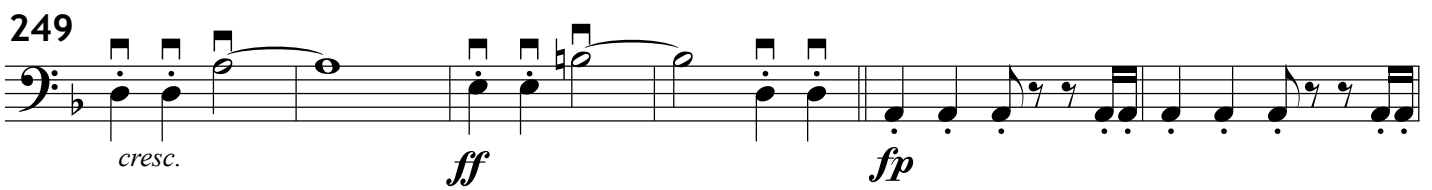
235



241



249



255



260



265



270

