

Cello

Symphonie Espagnole

Part I.

E. Lalo, Op.21.

Arr. by P.Struck

Allegro non troppo (♩ = 76)

a tempo
pizz.

ff

4

pp

10

arco

ff

16

ff

ff

ff

22

ff

28

ff

ff

33

ff

39

ff

pp

pp

46

pizz.

f

pp

52

cresc. mf

pp

59

59 *ppp* *cresc.*

64

64 *ppp* *mf* *pp* *f* *pp* *f* *arco* *pizz.* *arco*

70

70 *ppp* *ppp*

77

77 *f* *p* *f* *p* *ff*

82

82 *ff*

88

88 *p* *f*

94

94 *pp* *3* *pizz.*

102

102 *pp* *7*

114

114 *f* *pizz.*

119

119 *pp* *f* *arco* *2*

125



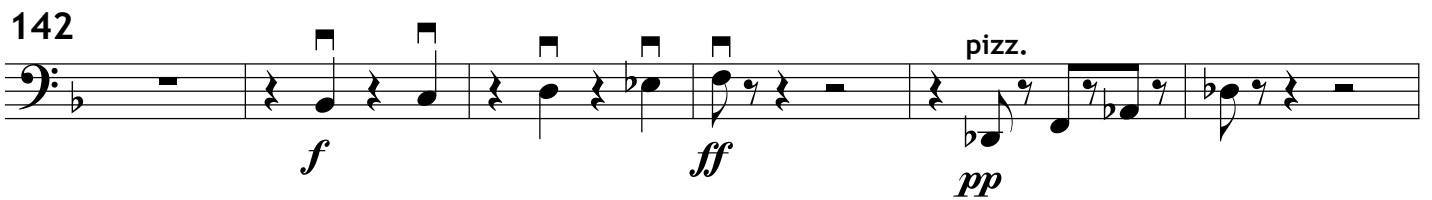
131



136



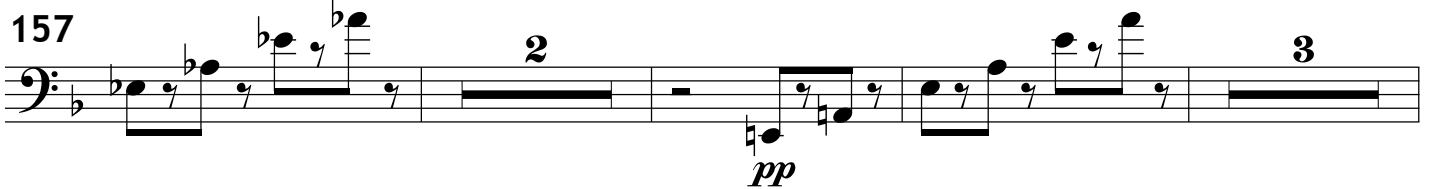
142



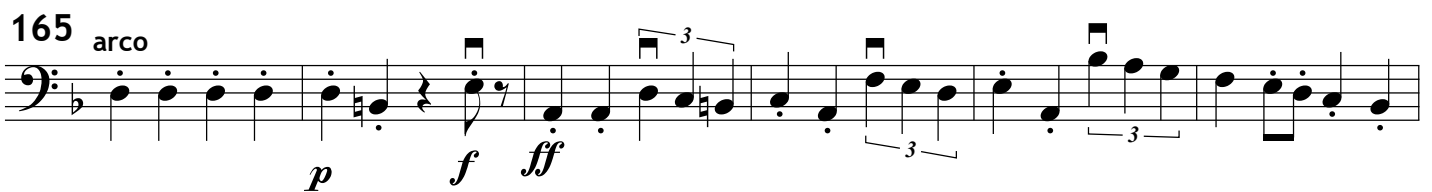
148



157



165



171

