

*Pieno di cheto*

# CANTATO

1

S.E. 2008

Handwritten musical notation for the first system, consisting of four staves. The first three staves contain a melodic line with various note values and rests, connected by slurs. The fourth staff contains a few notes and rests, also with a slur. The key signature has two flats and the time signature is 2/4.

## TRASPORTO

Handwritten musical notation for the second system, consisting of two staves. The first staff contains a melodic line with various note values and rests, connected by slurs. The second staff contains a few notes and rests, also with a slur. The key signature has two sharps and the time signature is 2/4.

Five empty musical staves.

CANTATO

2

UNIVERSITÄT  
SE. 2007

Handwritten musical notation for a cantata, consisting of four staves. The first staff is in treble clef with a key signature of two flats (Bb, Eb) and a 4/4 time signature. It contains a melodic line with various note values and rests, including a triplet of eighth notes. The second staff continues the melody. The third staff features a more complex rhythmic pattern with triplets and sixteenth notes. The fourth staff concludes the piece with a final note and a double bar line.

TRASPORTO

Handwritten musical notation for a 'TRASPORTO' section, consisting of two staves. The first staff is in treble clef with a key signature of two sharps (F#, C#) and a 3/4 time signature. It contains a melodic line with various note values and rests. The second staff continues the melody and ends with a double bar line.

CANTATO [3] S.A. 2007

Handwritten musical notation for the first system, consisting of four staves in G major and 4/4 time. The first three staves contain melodic lines with various note values and rests, while the fourth staff shows a few notes and a double bar line.

TRASPORTO

Handwritten musical notation for the second system, consisting of two staves in D major and 4/4 time. The first staff contains a melodic line with notes and rests, and the second staff continues the melody with a double bar line.

Sandviketo

# CANTATO 14

S.A. 2006

Handwritten musical notation on three staves. The first staff has a treble clef, a key signature of two flats (Bb, Eb), and a 6/8 time signature. The music consists of eighth and sixteenth notes with various phrasing slurs and accents. The second and third staves continue the melodic line with similar notation and phrasing. The third staff ends with a double bar line.

Ten empty musical staves for accompaniment or further notation.

**Lettura cantata**

The musical score for 'Lettura cantata' consists of three staves of music. The first staff begins with a treble clef, a key signature of two flats (B-flat and E-flat), and a 3/8 time signature. The melody is written in a single line with various note values and rests, including a long slur over the first few notes. The second staff continues the melody with similar notation. The third staff concludes the piece with a double bar line and repeat dots.

**Trasporto**

The musical score for 'Trasporto' consists of two staves of music. The first staff begins with a treble clef, a key signature of two flats (B-flat and E-flat), and a 3/4 time signature. The melody is written in a single line with various note values and rests, including a long slur over the first few notes. The second staff concludes the piece with a double bar line and repeat dots.

1

16

Canacien

# cantato s.e. 2006

Musical score for 'cantato s.e. 2006' in treble clef, common time (C). The score consists of three staves of music. The first staff contains measures 1 through 4. The second staff starts at measure 5 and contains measures 5 through 8. The third staff starts at measure 9 and contains measures 9 through 12. The music features a melodic line with various intervals, including half notes, quarter notes, and eighth notes, often grouped by slurs. There are several accidentals, including sharps and naturals, throughout the piece.

# trasporto s.e.2006

11. sopr

Musical score for 'trasporto s.e.2006' in treble clef, 3/4 time signature. The score consists of two staves of music. The first staff contains measures 1 through 6. The second staff starts at measure 7 and contains measures 7 through 10. The music features a melodic line with various intervals, including half notes, quarter notes, and eighth notes, often grouped by slurs. There are several accidentals, including sharps and naturals, throughout the piece.

17

2

Andato.

Handwritten musical score for the first section, marked "Andato.". It consists of four staves of music in treble clef. The key signature has two sharps (F# and C#), and the time signature is 6/8. The music features a melodic line with various rhythmic values and rests, and a bass line with some accidentals and rests. The piece concludes with a double bar line.

Trasposto

1 + sopra

Handwritten musical score for the second section, marked "Trasposto" and "1 + sopra". It consists of two staves of music in treble clef. The key signature has two sharps (F# and C#), and the time signature is 3/4. The music features a melodic line with various rhythmic values and rests, and a bass line with some accidentals and rests. The piece concludes with a double bar line.

Five empty musical staves, each consisting of five horizontal lines, provided for further notation.

3

CANTATO

8

S.E. 2006

Handwritten musical notation for the first section of a cantata. It consists of four staves of music in treble clef, key of B-flat major, and 3/4 time signature. The music features a melodic line with various note values, rests, and phrasing slurs. There are some handwritten annotations like 'x' and '\*' below the notes.

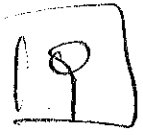
1. T. solo

TRASPORTO

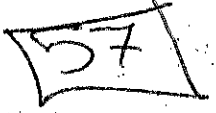
Handwritten musical notation for the second section of a cantata, labeled 'TRASPORTO'. It consists of two staves of music in treble clef, key of D major, and 4/4 time signature. The music features a melodic line with various note values and phrasing slurs.



~~XXXXXXXXXX~~ SILVIO



2



SE 2005

Lettura cantata

Moderato

Musical notation for 'Lettura cantata' section, consisting of three staves of music in treble clef with a key signature of one sharp (F#) and a 3/4 time signature. The music features a melodic line with various note values and rests, including some slurs.

Trasporto

$\frac{1}{2}$  (2040)

Musical notation for 'Trasporto' section, consisting of two staves of music in treble clef with a key signature of two flats (Bb, Eb) and a 2/4 time signature. The music features a melodic line with various note values and rests, including some slurs.

CANDIDATO

I

(D) (M)

10

Concerto S.E 2004 CN

Trasposto

CANTATO

11

55

Handwritten musical notation on three staves. The first staff begins with a treble clef, a key signature of one flat (B-flat), and a 4/4 time signature. The melody consists of quarter and eighth notes, with some triplets indicated by a '3' over the notes. A sharp sign (#) is placed below the staff in the second measure. The second and third staves continue the melody with similar rhythmic patterns and accidentals, including flats and sharps. The notation is written in black ink on a white background.

A series of ten empty musical staves, each consisting of five horizontal lines, arranged vertically. These staves are provided for further musical notation.

CANDIDATO II

CANTATO

52 / 12

S.E. 2003

TRASPORTO

1<sup>a</sup> Soprano

CANTATO

Handwritten musical notation for the 'CANTATO' section, consisting of three staves of music in 4/4 time with a key signature of one flat. The notation includes various rhythmic values, slurs, and dynamic markings.

TRASPORTO *1 tempo*

Handwritten musical notation for the 'TRASPORTO' section, consisting of two staves of music in 4/4 time with a key signature of one flat. The notation includes various rhythmic values, slurs, and dynamic markings.

(FERRARA)

ANDIDATO

CANTATO

54

114

S.A. 2003

Handwritten musical score for Cantato, measures 1-4. The score is in G major (one sharp) and 6/8 time. It consists of four staves of music with various note values and rests.

TRASPORTO (R)

Handwritten musical score for Cantato, measures 5-6. The score is in D major (two sharps) and 2/4 time. It consists of two staves of music.

DETTATO 1° TURNO S.A. 2003

Handwritten musical score for Dettaglio 1° Turno, measures 1-4. The score is in D major (two sharps) and 3/4 time. It consists of four staves of music.

TURNO

(R)

★ CAPUTATO

D.A. YOUR

15

15

Handwritten musical notation on a single staff. It begins with a treble clef and a sharp sign (#) indicating the key signature. The notation consists of a sequence of notes with stems and beams, including some notes with flags or beams that suggest eighth or sixteenth notes.

Handwritten musical notation on a single staff. It begins with a treble clef and a sharp sign (#). The notation continues with a series of notes and stems, showing rhythmic patterns similar to the first staff.

Handwritten musical notation on a single staff. It begins with a treble clef and a sharp sign (#). The notation shows a continuation of the rhythmic sequence with various note values and stems.

Handwritten musical notation on a single staff. It begins with a treble clef and a sharp sign (#). The notation concludes the sequence with final notes and stems.

Four empty musical staves, each consisting of five horizontal lines, provided for additional notation or practice.

Anno Accademico 2001/2002  
Sessione autunnale

**Solfeggio cantato**



**Trasporto**



*1/2 tempo*



49

117

A.A. 2001-2002 S.E.

CANTATO

TRASPORTO

R

st. sopra

Trasporto

S: A. 2004 CN 1 T. sopr

18



56/A

~~All. Mosso~~

119

# Contato

*Justo lento*

51

Handwritten musical notation for the 'Contato' section, measures 1-3. The music is written on three staves in treble clef with a key signature of one sharp (F#) and a common time signature (C). The first staff contains a melody with a circled '51' above it. The second staff features a bass line with triplets and slurs. The third staff continues the bass line with various rhythmic markings and slurs.

# Trasporto

*All. Sopa*

Handwritten musical notation for the 'Trasporto' section, measures 1-3. The music is written on three staves in treble clef with a key signature of one sharp (F#) and a 3/4 time signature. The first staff contains a melody with a circled '3' above it. The second staff features a bass line with triplets and slurs. The third staff continues the bass line with various rhythmic markings and slurs.

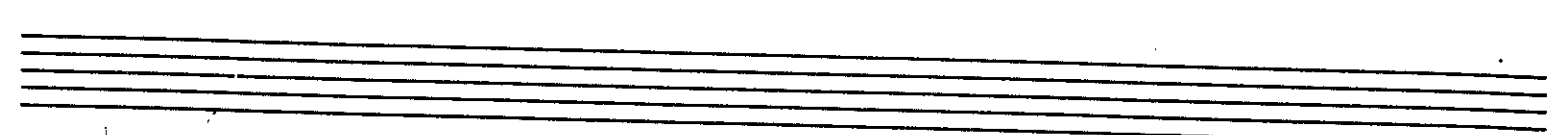
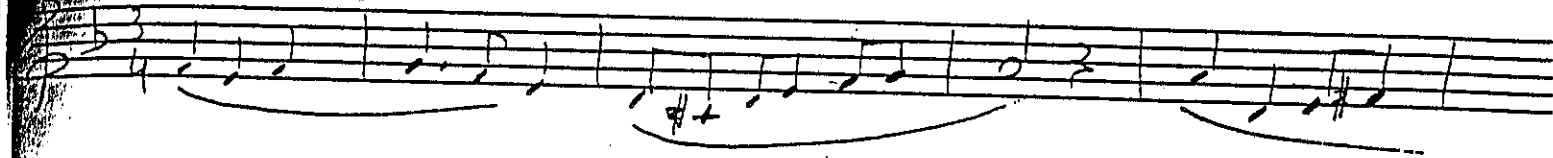
RASPORTO

rit. sopra [R]

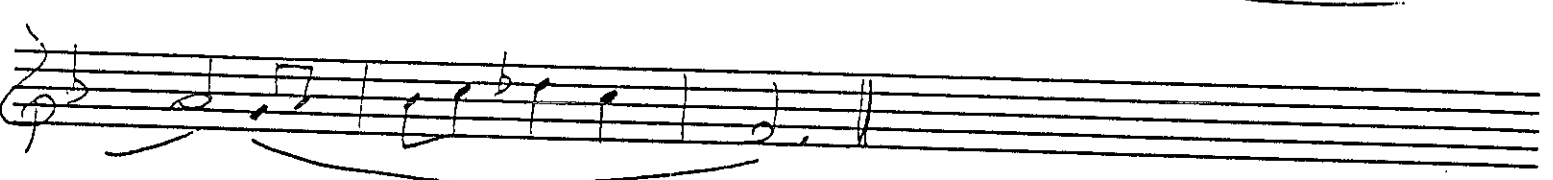
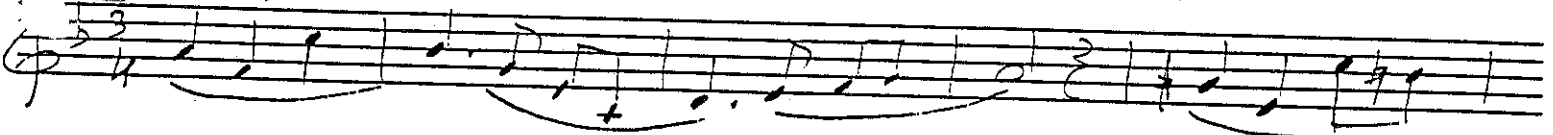


20

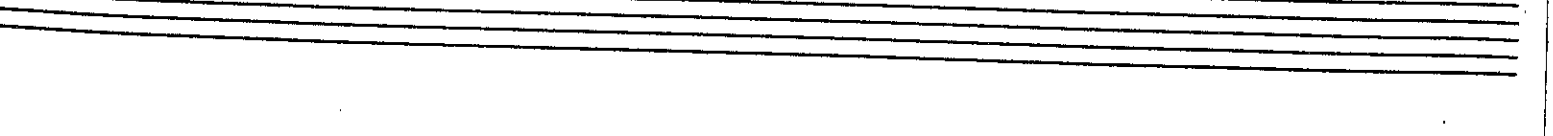
SACCO



[R] rit. sopra



1/2 t. sopra



= SOLFEGGIO CANTATO =

Handwritten musical notation for the first section, consisting of three staves. The first staff begins with a treble clef and a 3/4 time signature. The music features various rhythmic patterns, including eighth and sixteenth notes, and rests. A circled '3' indicates a triplet. A circled '2' is written below the first staff. The second and third staves continue the melodic line with similar rhythmic and melodic motifs.

↑ tempo = TRASPORTO = IT. A

Handwritten musical notation for the second section, consisting of three staves. The first staff begins with a treble clef and a 4/4 time signature. The music continues with eighth and sixteenth notes, and rests. A circled '3' indicates a triplet. The second and third staves continue the melodic line with similar rhythmic and melodic motifs.

= DETTATO =

Handwritten musical notation for the third section, consisting of three staves. The first staff begins with a treble clef and a 4/4 time signature. The music continues with eighth and sixteenth notes, and rests. A circled '3' indicates a triplet. The second and third staves continue the melodic line with similar rhythmic and melodic motifs.

# Cantata

1)

Handwritten musical score for the first system of a cantata. It consists of four staves. The top staff is in treble clef with a 6/8 time signature. The second and third staves are in treble clef. The bottom staff is in bass clef. The music features various note values, rests, and dynamic markings like 'p' and 'f'. There are also some handwritten symbols like '+' and 'T' below the notes.

2)

Handwritten musical score for the second system of a cantata. It consists of three staves. The top staff is in treble clef with a 4/4 time signature. The middle and bottom staves are in treble clef. The music continues with similar notation to the first system, including notes, rests, and dynamic markings. There are also some handwritten symbols like '+' and 'T' below the notes.

Four empty musical staves at the bottom of the page, intended for further notation.

23

TRASPORTO

*1. tutto 20/45*

184

TRASPORTO

*Al. sabb*





25

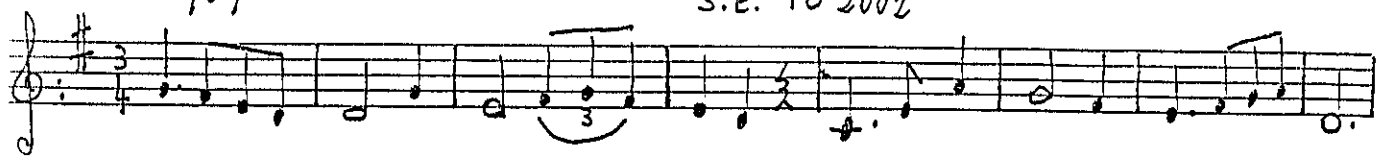
#a

TRASPORTO

1/2 t. ~~sof.~~

20/6/2002

=CANTATO= LICENZA S.E. TO 2002



11. Scipio 20/6/2002

=TRASPORTO= LICENZA TO S.E. 2002



20/6/2002

=SOLFEGGIO CANTATO PER CANTANTI= LICENZA TO S.E. 2002



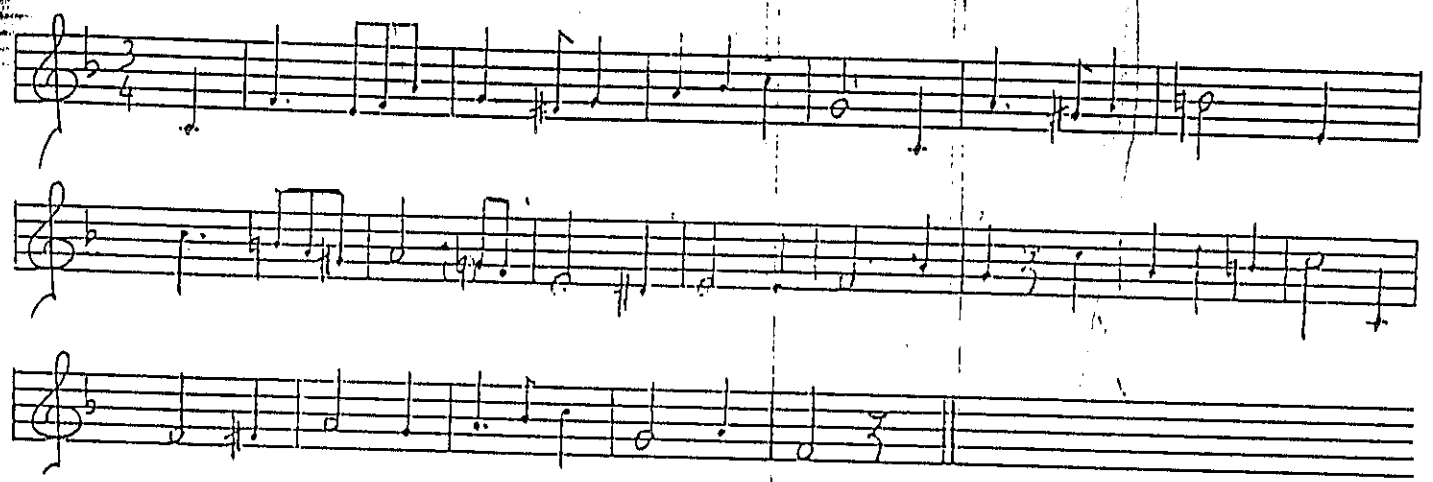
serie.o

# Solfeggio cantato in

27

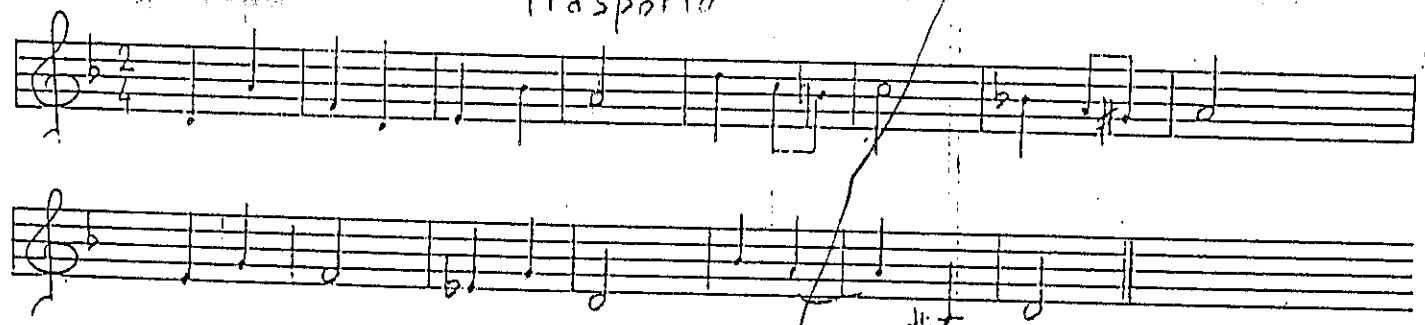
Anno Scol. 1934-35

Andante



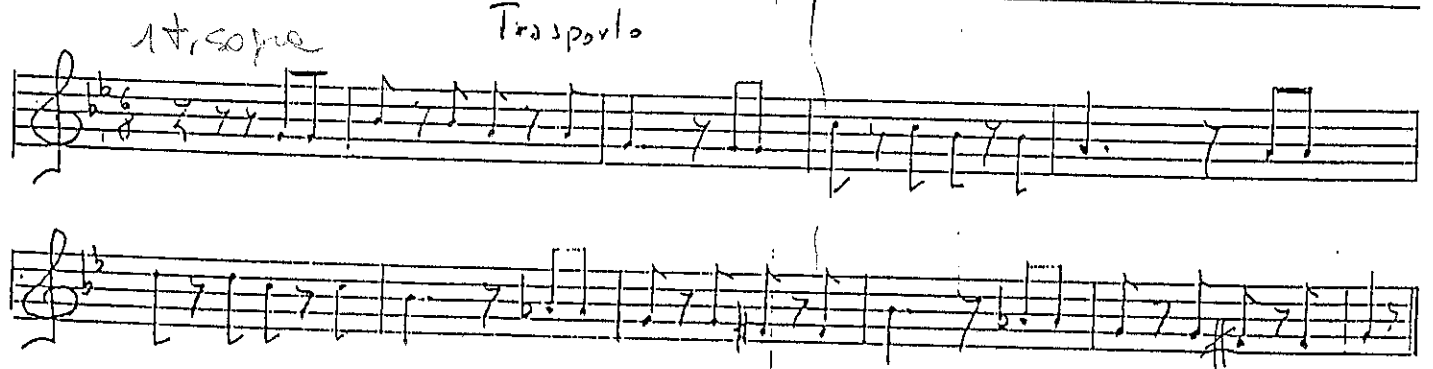
Handwritten musical notation for the first system, consisting of three staves of music in treble clef with a 3/4 time signature. The notes are written in a simple, clear style, with some accidentals and rests.

Trasporto



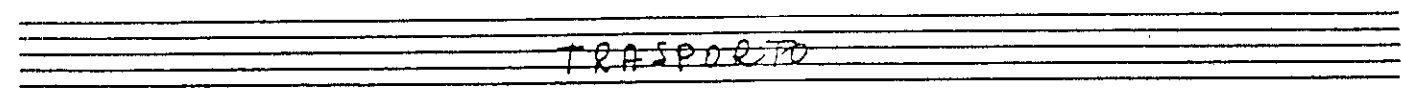
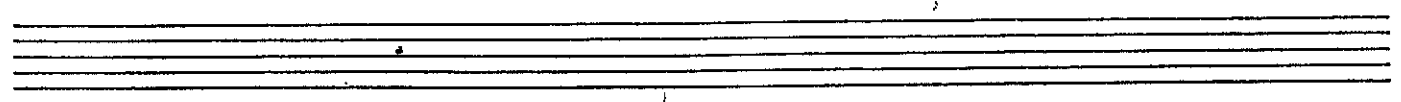
Handwritten musical notation for the second system, consisting of two staves of music in treble clef with a 2/4 time signature. The notation includes various note values and rests.

Trasporto



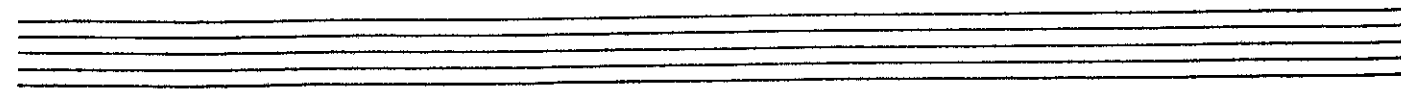
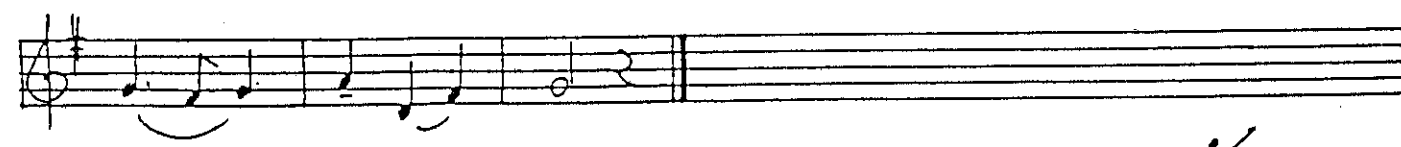
Handwritten musical notation for the third system, consisting of two staves of music in treble clef with a 3/8 time signature. The notation includes various note values and rests.

28



TRASPORTO

Allegretto a. t. solo



∕

*Cacc*



89

3

Solfeggi esultati

Andante

51

Handwritten musical score for the first section, titled "Andante". It consists of three staves of music in treble clef with a key signature of one sharp (F#) and a 3/4 time signature. The first staff begins with a dynamic marking of *mp*. The second staff features a triplet of eighth notes. The third staff includes a section marked "breve" and "a tempo". The music is characterized by flowing eighth and sixteenth notes, often grouped with slurs and ties.

Allegretto

51

Handwritten musical score for the second section, titled "Allegretto". It consists of three staves of music in treble clef with a key signature of two flats (Bb, Eb) and a 6/8 time signature. The first staff begins with a dynamic marking of *mp*. The second staff starts with a dynamic marking of *mf*. The third staff shows a dynamic progression from *mp* to *mf* to *f*. The music features a mix of eighth and sixteenth notes, with some triplet markings and slurs.

30

TRASPORTO

*tr. sopra*